

NOTE :
ALL INSTALATION MUST
HAVE APPROVEL BY MPS

DECORATIVE LIGHTING



MAJLIS PERBANDARAN SELAYANG
 PERSARAI 5, BANDAR BARU SELAYANG,
 68100 BATU CAJES,
 SELANGOR DARUL EHSAN

CADANGAN LAMPU
 DI DALAM KAWASAN
 MAJLIS PERBANDARAN
 SELAYANG

Pembantu Teknik Awam
 Jabatan Kejuruteraan

(SHAIFUL NOR AIDIL BIN MOHD JAYA)
 Jurutera
 Jabatan Kejuruteraan

(EN. OTHMAN BIN IDRIS)
 Pengarah
 Jabatan Kejuruteraan

Tajuk Lukisan
 DECORATIVE LIGHTING

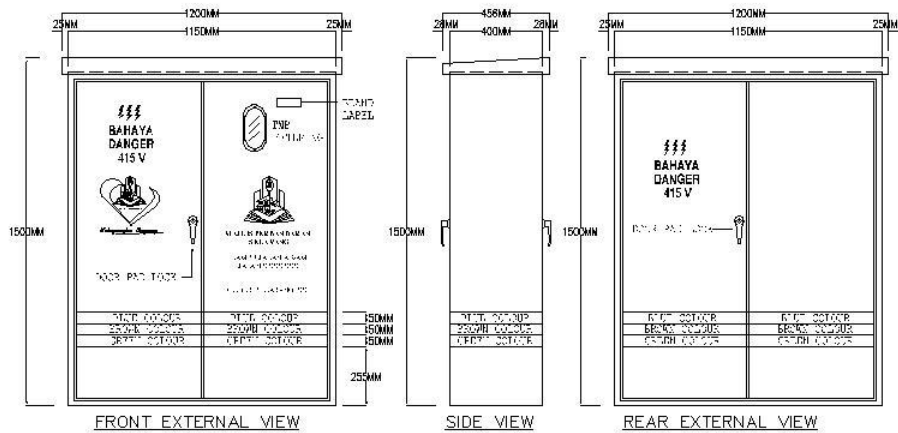
SKALA : NOT TO SCALE

DILUKIS: AMIN

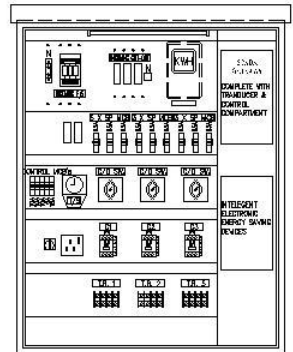
DISEMAK: SHAIFUL

TARIKH: DEC 2011

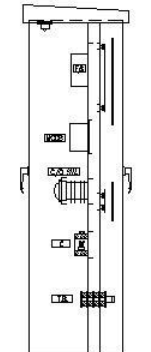
NO. LUKISAN
 MPS/SP-LJ-01



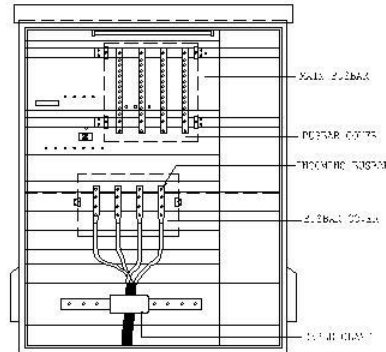
FRONT EXTERNAL VIEW
WEATHERPROOF FEEDER PILLAR



FRONT INTERNAL MOUNTING VIEW



SIDE VIEW
MOUNTING VIEW



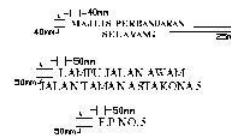
REAR INTERNAL MOUNTING VIEW

FABRICATION DETAILS:

- CONSTRUCTION : MODULAR FLOOR MOUNTED WEATHER PROOF CUBICLE BOARD
- TYPE : FORM 2a
- SHEET METAL USED : E G SHEET
- THICKNESS-PANEL : 2.0mm
- PAINTING : ANTI-CORRISION POLEYSTER POWDER COATED
- PANEL COLOUR/CODE : LIGHT GREY SIMILAR TO BS 381C COLOUR 631 DR EQUIVALENT

- MPS LOGO : A3 SIZE
- BRAND : INDKOM DR EQUIVALENT
- LINE COLOUR : REFER TO MPS LOGO

QTY./NDS.	LEGEND	DESCRIPTION	BRANDS
1	F/S	60A 1FN INCOMING FUSE SWITCH C/W FUSE LINK	EPEN
1	N/L	60A INCOMING NEUTRAL COPPER LINK	-
3	CUT-OUT	60/60A TNB INCOMING CUT-OUT FUSE UNIT C/W FUSE LINK	PLK
1	CUT-OUT	60/60A TNB INCOMING NEUTRAL CUT-OUT LINK UNIT	PLK
1	T/S	24 HOURS TIME SWITCH C/W BATTERY RESERVED	ABB
1	SW	0-3 POSITION CONTROL SELECTOR SWITCH	VISIONTECH
1	S/S/O	13amp. 3-PIN SWITCH SOCKET OUTLET	-
1	L/S	DOOR LIMIT SWITCH	MIKRO
1	F/L	18 WATT FLUORESCENT LIGHT	GOODLITE
3	C1 - C3	60A TP 240V AC1 CONTACTOR	LG or FUJI
3	C/O/S	60A 1/0/2 CHANGE-OVER BY PASS SEL/SW.	SALZER
12	T/B	60A NEUTRAL LINK AS TERMINAL BLOCK	PLK
1	CUT-OUT	60/10A CUT-OUT FUSE UNIT C/W FUSE LINK	PLK
6	FUSE	20/6A CONTROL FUSE UNIT C/W FUSE LINK	PLK
3	FUSE	20/10A CONTROL FUSE UNIT C/W FUSE LINK	PLK
1	FUSE	20/16A CONTROL FUSE UNIT C/W FUSE LINK	PLK
8	MCB	3DA, 16KA 5P MCB	HAGER DR ABB
1	KWH	KILOWATT HOUR MEIER	BY TNB



MAJLIS PERBANDARAN SELAYANG
PERSIARAN 3, BANDAR BARU SELAYANG,
68100 BATU GAYAS,
SELANGOR DARUL EHSAN

CADANGAN LAMPU
DALAM KAWASAN
MAJLIS PERBANDARAN
SELAYANG

(EN. SHAFILU NOR ADIL BIN MOHD JAYA)
Juruaera
Jabatan Kejuruteraan

(EN. OTHMAN BIN IDRIS)
Pengarah
Jabatan Kejuruteraan

Tajuk Lukisan

PETI PEMBEKAL LAMPU JALAN
SCADA MONITORING
ALAT PENUNJANG TENAGA

SKALA : NOT TO SCALE

DILUKIS: AMIN

DISEMAK: EN. SHAFILU

KEMASKINI: DEC 2011

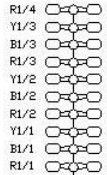
NO. LUKISAN

MPS/QP-LJ 02

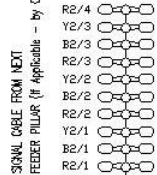
NOMENCLATURE
FP 5-Y2/2 TH 2006

TAHUN PEMBUATAN
NAMA TAMAN
FILE NO. 2
YELLOW PHASE CIRCUIT 2 (CONDUCTOR NO. 2)
FEEDER PILLAR-5

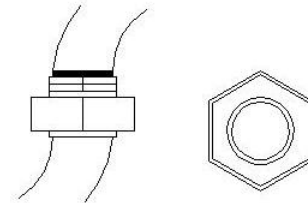
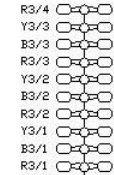
MAX. 10 MM CM CABLE/ BRIDGE AND LISTING COLUMN
2/4 TAGES. 100V 50/60 (20/25/30/35)



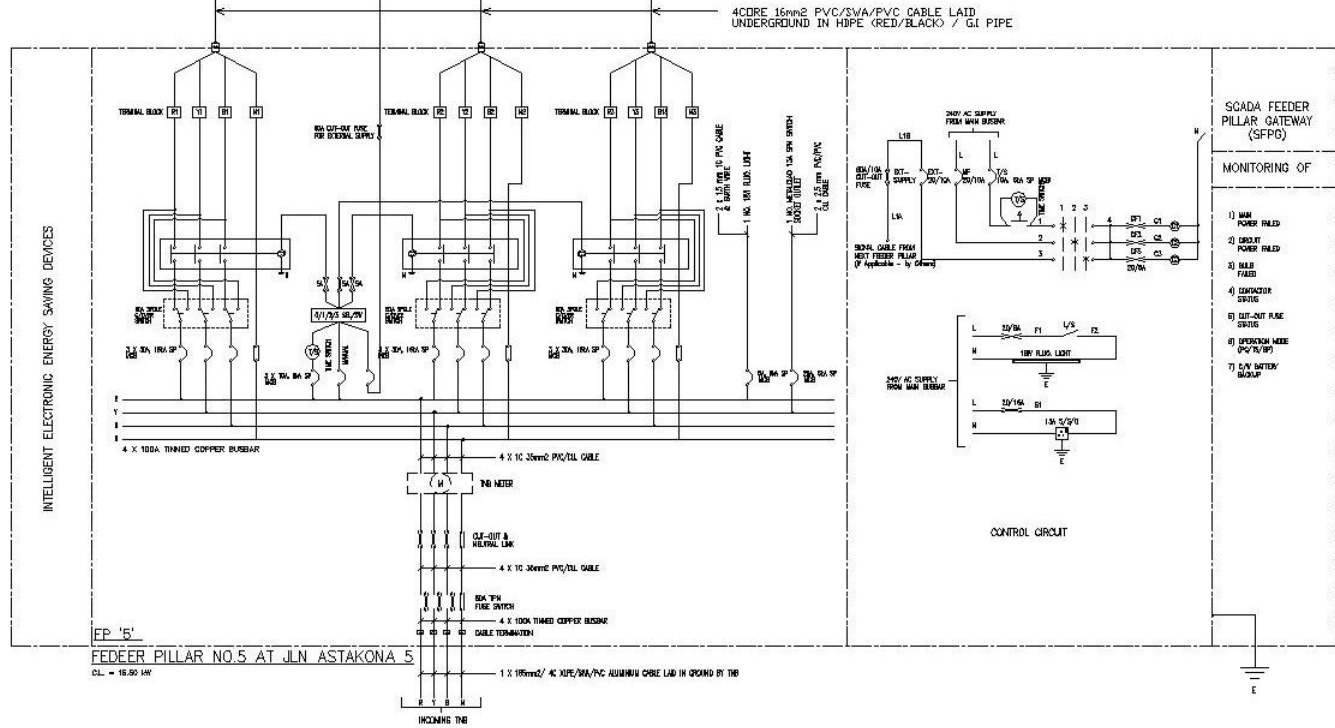
MAX. 10 MM CM CABLE/ BRIDGE AND LISTING COLUMN
2/4 TAGES. 100V 50/60 (20/25/30/35)



MAX. 10 MM CM CABLE/ BRIDGE AND LISTING COLUMN
2/4 TAGES. 100V 50/60 (20/25/30/35)



CABLING GLAND
NOTA: SETIAP KABEL HESTILAH DISAMBUNGAN
DENGAN CABLING GLAND PADA PLATE



FP '5'
FEEDER PILLAR NO.5 AT JLN ASTAKONA 5
CL. = 15.60 MW
INCANSING THB



MAJLIS PERBANDARAN SELAYANG
PERSIARAN 3, BANDAR BARU SELAYANG,
68100 BATU CAVES,
SELANGOR DARUL EHSAN

CADANGAN LAMPU
DALAM KAWASAN
MAJLIS PERBANDARAN
SELAYANG

(EN. SHAIFUL NOR ADIL BIN MOHD JAYA)
Jurutera
Jabatan Kejuruteraan

(EN. OTHMAN BIN IDRIS)
Pengerah
Jabatan Kejuruteraan

Tajuk Lukisan

LITAR LAMPU JALAN
SCADA
ALAT PENILAIAN TENAGA

NOTA:
SCADA
Mempunyai sistem konsep terbuka

SKALA : NOT TO SCALE

DILUKIS: AMIN

DISEMAK: EN. SHAIFUL

KEMASKINI: DEC 2011

NO. LUKISAN
MPS/GP-LJ 03